



POLMED

OUR INVESTMENT OUR HEALTH OUR FUTURE



HOW TO GET YOUR POLMED E-CARD

HOW TO REQUEST AN E-CARD



Members can request their online cards using the POLMED WhatsApp number on **060 070 2547**.

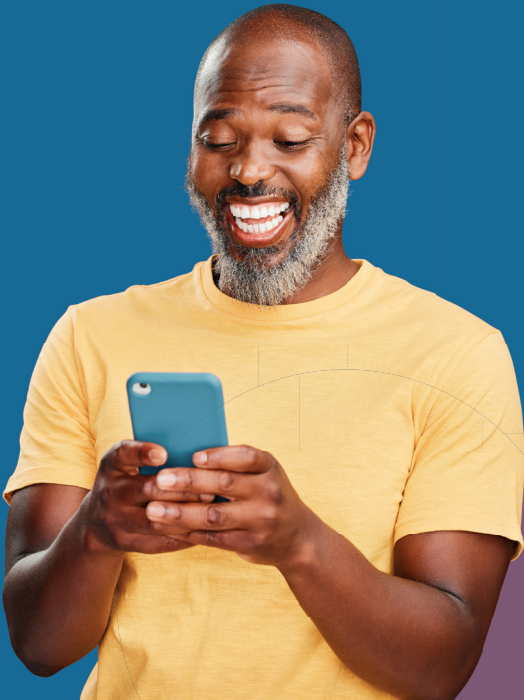


E-cards can also be requested in the Member zone at **www.POLMED.co.za** or by calling our client service and requesting a download link. Once a member receives this link, they can request their online card.

ADVANTAGES OF E-CARDS



The link can be shared with all family members so they can download it and have the digital card on their phones for easy access.



WHEN DOES THE SCHEME ISSUE E-CARDS TO MEMBERS?

- Printed cards are only issued when a new member registers and is admitted to the scheme for the first time.
- Members will receive e-cards, not printed cards, for all membership changes (e.g., registration or termination of dependants).

E-CARDS WILL BE ISSUED TO MEMBERS IN THE FOLLOWING INSTANCES:



New beneficiary registration



Plan change



Beneficiary reinstatement



Beneficiary termination



Changing of member details



Changing of beneficiary details

Regards
POLMED

